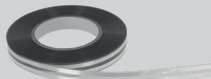
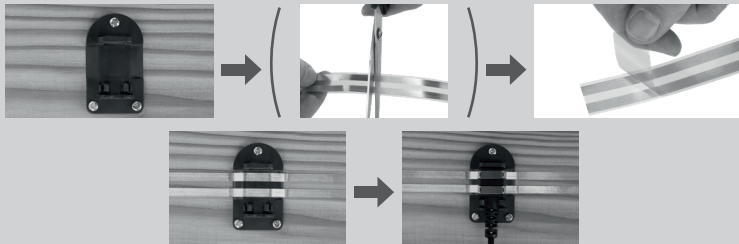


Lieferumfang / Pièces fournies / Included in delivery / Dotazione / Zakres dostawy:



Montage / Montage / Mounting / Montaggio / Montaž:



(DE) Bitte beachten Sie die Bedienungsanleitung von SnailStop Elektrischer Schneckenzaun Starter-Set (Art. 291130) bzw. SnailStop Stromgerät (Art. 291125).

(FR) Veuillez tenir compte du mode d'emploi du kit débutant de la clôture électrique anti-limaces SnailStop (Réf. 291130) et/ou de l'électrificateur SnailStop (Réf. 291125).

(EN) Please refer to the operating instructions for SnailStop Electric Slug Fence Starter Kit (item 291130) or SnailStop Power Supply (item 291125).

(IT) Seguire le istruzioni della recinzione elettrica contro le lumache SnailStop Starter Set (art. 291130) e dell'apparecchio elettrico SnailStop (art. 291125).

(PL) Należy zapoznać się z instrukcją obsługi zestawu startowego elektrycznego ogrodzenia przeciw ślimakom SnailStop (art. 291130) lub zasilacza SnailStop (art. 291125).

Albert Kerbl GmbH
Felizenzell 9
84428 Buchbach, Germany
Tel. +49 8086 933 - 100
Fax +49 8086 933 - 500
E-Mail info@kerbl.de
www.kerbl.de

Kerbl Austria Handels GmbH
Wirtschaftspark 1
9130 Poggersdorf
Tel. +43 4224 81555
Fax. +43 4224 81555-629
E-Mail order@kerbl-austria.at
www.kerbl-austria.at

Kerbl France Sarl
3 rue Henri Rouby, B.P 46 Soutz
68501 Guebwiller Cedex, France
Tel. +33 3 89 62 15 00
Fax +33 3 89 83 04 46
E-Mail info@kerbl-france.com
www.kerbl-france.com

Kerbl UK Limited
8 Lands End Way
Oakham, Rutland LE15 6RF UK
Phone +44 01572 722558
Fax +44 01572 757614
E-Mail enquiries@kerbl.co.uk
www.kerbl.co.uk